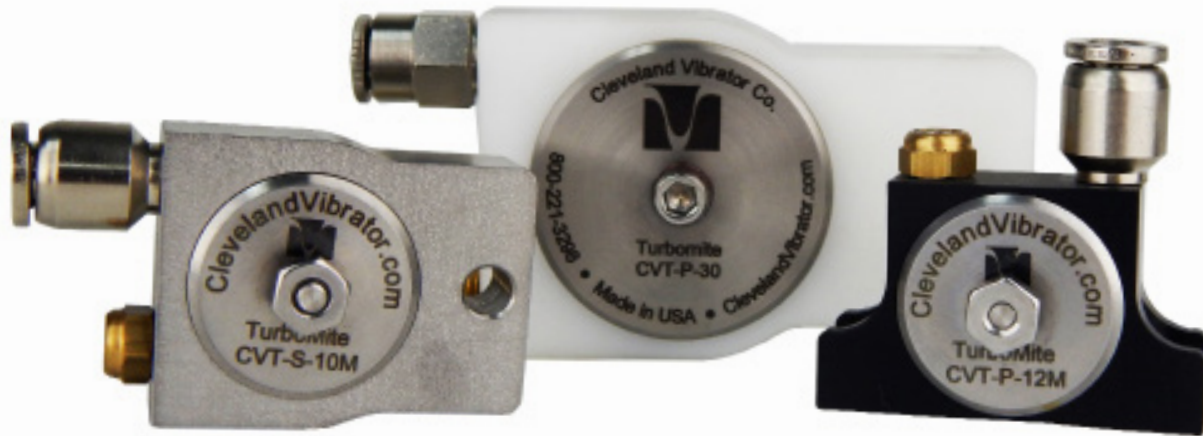


Turbomite CVT-P and CVT-S Series Turbine Vibrators



Built Specifically for Demanding Environments and Precise Jobs

Pneumatic power, acetal plastic and laser-etched #304 stainless steel construction make our CVT-P (acetal body) Series and CVT-S (stainless steel body) Series Turbine Vibrators optimal for material loads from 25 lbs. to 1000 lbs. With a design that offers unparalleled efficiency, these vibrators provide a remarkably low noise level and optimal force-to-weight and force-to-air consumption ratios that are easily two to four times better than competitor products. They can be mounted at any angle on bins, hoppers, chutes, feeders, tracks and small screeners.

BENEFITS INCLUDE

- Very low air consumption and noise
- Starts and runs at low inlet pressures (some as low as 5 psi)
- Permanently lubricated and sealed bearings enable uninterrupted operation
- Last longer than ball vibrators
- Acetal body that's ideal for food and chemical use
- Laser-etched label prevents contamination
- Small and miniature models offer unique solutions to precise jobs
- Models with stainless steel body that share CVT-P specs are also available (CVT-S-10 and CVT-S-60)

Turbomite CVT-P and CVT-S Series Turbine Vibrators



MODEL	WEIGHT (LBS./KG)	UNBALANCE (IN-LBS./CM-KG)	@20 PSI/1.4 BAR			@40 PSI/2.8 BAR		
			SPEED (VPM)	FORCE (LBF./N)	AIR CONS (CFM/LPM)	SPEED (VPM)	FORCE (LBF./N)	AIR CONS (CFM/LPM)
CVT-P-1 (M)	.04/.02	.001/.0015	15,970	7.2/32	.26/7.3	18,500	9.7/43.1	.44/12.5
CVT-P-10 (M)	.1/.05	.002/.003	18,200	18.8/83.5	.49/13.8	19,400	21.4/95	.78/13.8
CVT-P-12 (M)	.1/.05	.002/.003	18,200	18.8/83.5	.49/13.8	19,400	21.4/95	.78/13.8
CVT-P-20	.2/.07	.006/.007	8,010	10.9/48.5	.69/19.5	12,300	25.8/114.5	1.1/31.4
CVT-P-22 (M)	.2/.07	.006/.007	8,010	10.9/48.5	.69/19.5	12,300	25.8/114.5	1.1/31.4
CVT-P-30	.54/.25	.013/.017	8,400	26/115.4	.96/27.2	9,840	35.8/158.9	1.6/44.5
CVT-P-50	1.4/.62	.044/.052	5,670	45.1/200.2	1.7/48.6	7,220	65.1/289	2.8/80.2
CVT-P-60	1.24/.57	.12/.14	4,800	78.5/348.5	1.3/35.9	5,910	119.1/528.8	2/58

Data for the two tables on left are obtained on 1,000 pound laboratory test block.

Frequency of vibration and resulting force will decrease on a less rigid

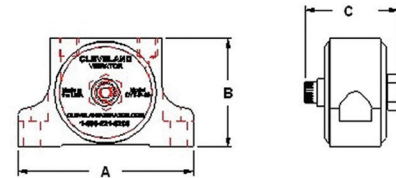
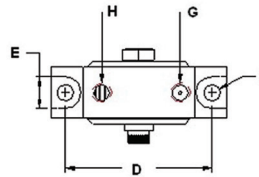
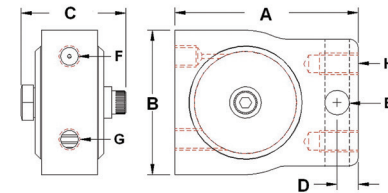
MODEL	WEIGHT (LBS./KG)	UNBALANCE (IN-LBS./CM-KG)	@60 PSI/4.1 BAR			@80 PSI/5.5 BAR		
			SPEED (VPM)	FORCE (LBF./N)	AIR CONS (CFM/LPM)	SPEED (VPM)	FORCE (LBF./N)	AIR CONS (CFM/LPM)
*CVT-P-1	.04/.02	.001/.0015	19,250	10.5/46.7	.61/17.3	N/A	N/A	N/A
**CVT-P-10	.1/.05	.002/.003	20,500	23.9/106.1	1.09/30.8	20,900	24.8/110.1	1.41/39.9
CVT-P-12	.1/.05	.002/.003	20,500	23.9/106.1	1.09/30.8	20,900	24.8/110.1	1.41/39.9
CVT-P-20	.2/.07	.006/.007	8,010	10.9/48.5	.69/19.5	12,300	25.8/114.5	1.1/31.4
CVT-P-22	.2/.07	.006/.007	15,600	41.5/184.1	1.5/43.2	18,000	55.2/245.1	2/55.4
CVT-P-30	.54/.25	.013/.017	10,580	41.3/183.4	2.2/61.2	11,300	47.1/209.1	2.8/78.4
CVT-P-50	1.4/.62	.044/.052	7,810	76.2/338.3	3.8/109.5	8,070	81.4/361.4	4.9/138.4
**CVT-P-60	1.24/.57	.12/.14	6,280	134.5/597.2	2.8/79.6	6,560	146.8/651.8	3.6/101.2

CVT-P ONE BOLT STYLE

MODEL	A	B	C	D	E	F	G	H
CVT-P-1	1 1/4" 3.2 cm	7/8" 2.2 cm	23/32" 1.8 cm	3/16" 0.48 cm	5/32" 0.39 cm	#10-32 UNF	#10-32 UNF	#6-32 UNF
CVT-P-1 M	1 1/4" 3.2 cm	7/8" 2.2 cm	23/32" 1.8 cm	3/16" 0.48 cm	5/32" 0.39 cm	#10-32 UNF	#10-32 UNF	#6-32 UNF
CVT-P-10	1 1/2" 3.8 cm	19/32" 3.3 cm	31/32" 2.5 cm	3/16" 0.48 cm	7/32" 0.56 cm	#10-32 UNF	#10-32 UNF	#10-32 UNF
CVT-P-10M	1 1/2" 3.8 cm	19/32" 3.3 cm	31/32" 2.5 cm	3/16" 0.48 cm	7/32" 0.56 cm	M5	M5	M5
CVT-P-20	1 5/8" 4.1 cm	1 1/4" 3.1 cm	1 1/8" 2.8 cm	3/16" 0.4 cm	1/4" .56 cm	#10-32 UNF	#10-32 UNF	#10-32 UNF
CVT-P-30	2 3/4" 7 cm	1 3/4" 4 cm	1 1/4" 3.2 cm	3/8" 0.95 cm	1 1/32" 0.84 cm	1/8" NPT	1/8" NPT	1/4-20 UNC
CVT-P-50	4" 10.2 cm	2 1/2" 6.4 cm	1 5/8" 4 cm	3/4" 1.9 cm	3/8" 0.95 cm	1/4" NPT	1/4" NPT	NA
CVT-P-60	4 1/8" 10.5 cm	2 11/16" 6.8 cm	2 1/16" 5.2 cm	1 1/16" 1.7 cm	7/16" 1.1 cm	1/4" NPT	1/4" NPT	NA

**CVT-10 Model & CVT-60 Models are available in Stainless Steel Body

*CVT-1 Units must NOT be operated over 60 PSI



CVT-P TWO BOLT STYLE

MODEL	A	B	C	D	E	F	G	H
CVT-P-12	1 3/4" 4.4 cm	1 1/16" 2.7 cm	1 5/16" 2.3 cm	1 7/16" 3.7 cm	5/16" 0.8 cm	3/16" 0.4 cm	#10-32 UNF	#10-32 UNF
CVT-P-12M	1 3/4" 4.4 cm	1 1/16" 2.7 cm	1 5/16" 2.3 cm	1 7/16" 3.7 cm	5/16" 0.8 cm	3/16" 0.4 cm	M5	M5
CVT-P-22	2 1/4" 5.7 cm	1 1/4" 3.1 cm	1 3/32" 2.8 cm	1 3/4" 4.4 cm	3/8" 0.375 cm	7/32" 0.56 cm	#10-32 UNF	#10-32 UNF
CVT-P-22M	2 1/4" 5.7 cm	1 1/4" 3.1 cm	1 3/32" 2.8 cm	1 3/4" 4.4 cm	3/8" 0.375 cm	7/32" 0.56 cm	M5	M5

FOR MORE INFORMATION

Call: Sales at 800-221-3298

Email: sales@clevelandvibrator.com

Buy Online: www.clevelandvibrator.com

With a product line that includes some of the most compact turbine vibrators available, our Turbomite CVT-P and CVT-S Series Turbine Vibrators are designed to start and run at low pressure and provide a wide variety of force outputs from 7 lbs. to 146 lbs. This makes them ideal for precise small jobs on materials weighing between 25 lbs. and 1,000 lbs.

